



## Electrified Cylindrical Locksets with Request-to-Exit Output

### Applications

Electra™ Pro Electrified Cylindrical Locksets are designed for the access control of openings in commercial, industrial and institutional facilities where code compliance, dependable operation and resistance to physical abuse is required, including:

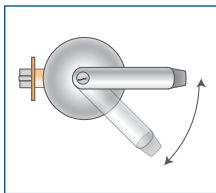
- High-Rise Offices
- Hospitals
- Universities
- Museums
- Government Centers
- Airports
- Factories

### Building and Fire Life Safety Code Compliant

Electra™ Pro electrified cylindrical locks ensure that the door stays latched even when unlocked, maintaining fire door integrity. Electra™ Pro locksets comply with all national building and fire life safety code requirements for use on fire rated doors, including high-rise stairwell and elevator lobby doors where the use of electric strikes and magnetic locks is prohibited.

### Security with Superior Aesthetics

Available in failsafe and failsecure modes to accommodate either security or fire life safety applications, Electra™ Pro Z7200 electrified locksets provide a superior appearance compared to exposed and vulnerable electric strikes and magnetic locks, while eliminating the need for request-to-exit devices.



### Vandal Resistant Lever Handles Standard With SDC Brand Lockset

When locked, the built-in clutch permits the handles to operate without retracting the latch, reducing potential for damage.

### Benefits

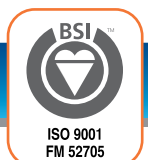
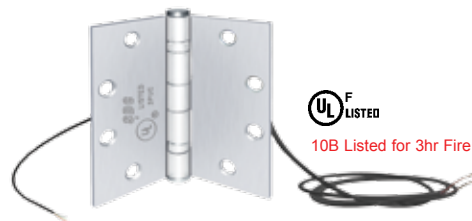
- May be used in new or retrofit construction
- Building and Fire Life Safety Code Compliance
- Ideal for high usage environments.
- Retrofits existing mechanical lock prep



### Features

- Request-to-exit output standard with all locksets
- Dual Voltage 12 and 24VDC
- Choice of failsafe or failsecure operating mode
- Clutch allows the lever to operate while the door stays locked for increased vandal and abuse resistance
- Independent power return springs for effective lever action and prevention of lever sag
- SDC cylinder with 'C' keyway
- Small format Interchangeable core (optional)
- No exposed mounting screws
- Strikes available to match existing frame preparation
- Choice of seven architectural finishes
- Exceeds ANSI A156-2 Grade 1 specifications
- SDC lever handle styles comply with ADA easy access requirements and CSFM, California State Fire Marshal, Title 19

### SDC PTH Power Transfer Hinge with 5ft Cable



## Ordering Information

### Model

A Request-to-Exit output is standard with all models. Turning the inside lever for egress activates the built in REX output providing a momentary signal to the access control REX input for alarm shunt during egress.

All standard locksets are supplied with a 6 pin cylinder with a Schlage "C" equivalent keyway. Keyed different, with 2 keys. See *keyed alike options below*.

**Z7250** Failsafe - Outside locked when energized, unlocked by an access control or key from the outside and rotating the inside lever provides egress at all times.

**Z7252** Failsecure - Outside locked when de-energized. Unlocked by an access control or key from the outside and rotating the inside lever provides egress at all times

### Lever Trim

SDC Electra™ Pro Z7200 levers comply with ADA requirements. The heavy-duty power spring provides smooth and efficient action and the lever's clutch mechanism prevents breakage.



**G** Galaxy



**E** Eclipse

### Finish

- |                                |  |
|--------------------------------|--|
| <b>C</b> 605 Bright Brass      | <b>P</b> 625 Bright Chrome               |
| <b>D</b> 606 Dull Brass        | <b>Q</b> 626 Dull Chrome ( <i>std.</i> ) |
| <b>H</b> 613 Oil Rubbed Bronze |  |

### Cylinders

#### Standard Cylinders

Keyed different is standard and need not be specified

**6PKA** 6 Pin Cylinder, keyed alike (*optional*)

#### Interchangeable Core

**IC6P-KA** 6 pin I-Core, small format, keyed alike

**IC6P-KD** 6 pin I-Core, small format, keyed different

**IC7P-KA** 7 pin I-Core, small format, keyed alike

**IC7P-KD** 7 pin I-Core, small format, keyed different

### Options

#### Optional Strikes

A 4.875" ANSI strike is standard unless specified otherwise

**ST2** 2-1/4" ANSI strike with square corners

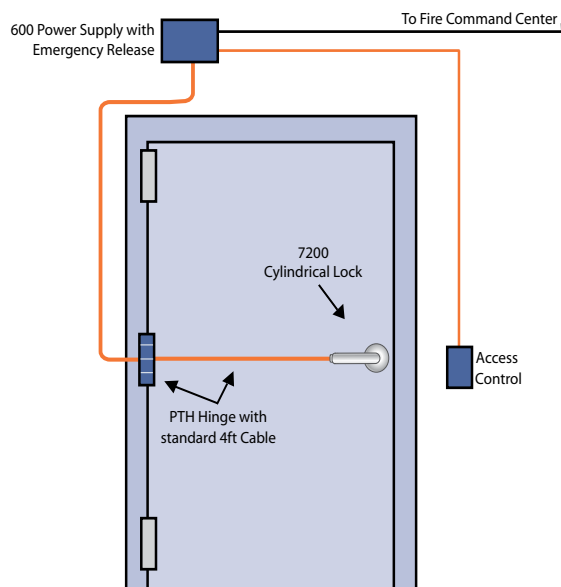
#### Optional Latch and Backset Assemblies

The standard latch assembly supplied has a 9/16" projection, 2-3/4" backset and is UL listed for use with single door openings with 3 hour A Label fire doors.

**B2** 2-3/8" backset latch assembly with 9/16" latch

### Specifications

<b>Voltage</b>	Dual 12/24VDC Input
<b>Current</b>	600/300mA @ 12/24VDC
<b>REX Output</b>	SPDT 3 Amps @ 30VDC
<b>Latch bolt</b>	9/16" throw
<b>Backset</b>	2-3/4"
<b>Strike</b>	4-7/8" ANSI A115.2
<b>Door Thickness</b>	1-3/4" to 2-1/8"





**PTH Power Transfer Hinge**

**Features**

- UL10B Listed for 3 Hr Fire Doors. If the hinge you are presently using does not bear the F mark, it is not listed for use with fire doors.
- 5ft Cable
- Wire Replacement Warranty

**Application**

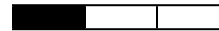
Installed in the center hinge position of the door, PTH Power Transfer Hinges provide the concealed wires required between the door and the frame, for the purpose of powering and monitoring electric door hardware.

**Uses Include**

- Electric Lock Power and Control
- Door and Lock Status Signaling
- Request-to-Exit Signaling

**Ordering Information**

**Model**



**PTH-4** Four conductor hinge, 1 Amp @ 12/24V per pair, 4-1/2" x 4-1/2" five knuckle standard weight

**PTH-10** Ten conductor hinge, 1 Amp @ 12/24V per pair, 4-1/2" x 4-1/2" standard weight

**Consult factory for 3 knuckle, or special sizes**

**Finish**



All base material steel

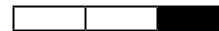
**Q** 626 Dull Chrome (*standard*)

**C** 605 Bright Brass

**H** 613 Oil Rubbed Bronze

**P** 625 Bright Chrome

**Options**

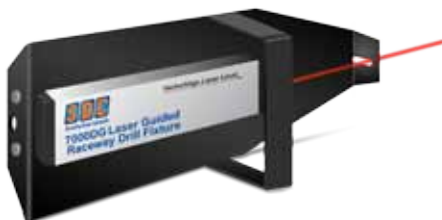


**PTH hinge with door position switch**

**DPS** Concealed Door Position Switch  
SPDT, 250mA @ 30VDC

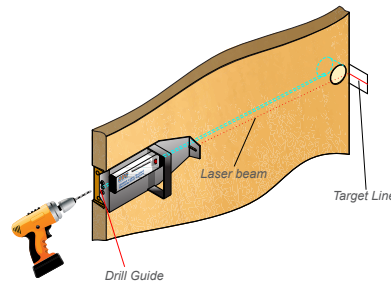


**Door Core Drill Guide**



**Features**

The SDC laser guided door core drill assembly provides an economical method of wire preparation for particle filled or solid wood doors to accommodate the installation of electrified locksets, exit devices and hinges



**Model**

**7000-DG** Door Core Drill Guide

**7000-DB1/4** 1/4" x 4 Ft. Drill Bit

**7000-DB3/8** 3/8" x 4 Ft. Drill Bit

